

Pipster User Manual

Pipster offers a great risk-benefit ratio, the way it has to open operations and follow the price makes its coverage and opening operation at different points give us stability over time with great benefits.

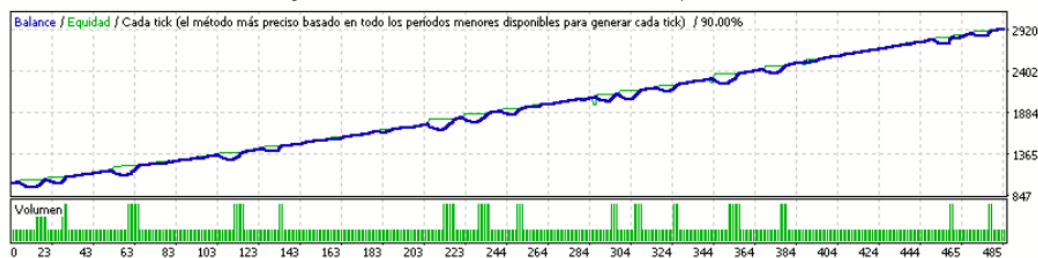
Description:

Pipster opens based on what the MACD and RSI indicators report, uses both indicators and when they converge at the specific point the bot launches its operations. As time passes and the market moves, it always carries out operations with a reduced lot and waiting for the convergence to take the indicated path with a higher lot.

Currently the Pipster is delivered with a total of 3 sets of operation, with the same operation but adapting the bot to the capital that the user has in the account, or to the risk that he wants to assume. Next, each of the sets is detailed and we show the data that has given its BT of 2 years:

- Set 1: Pipster 1k.set (BT 2 años)

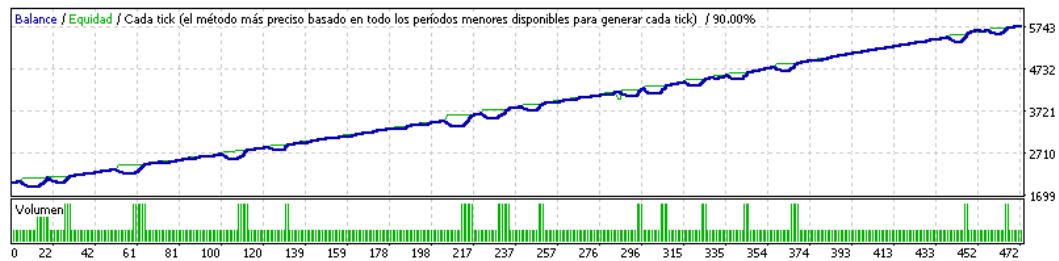
Símbolo	EURUSD (Euro vs US Dollar)		
Periodo	15 minutos (M5) 2018.01.02 00:00 - 2020.03.30 23:45 (2018.01.02 - 2020.03.31)		
Modelo	Cada tick (el método más preciso basado en todos los períodos menores disponibles)		
Parámetros	Magic=66000; LotK1_7=0.01; LotK8_13=0.03; LotK14_20=0.01;		
Barras en el historial	56609	Ticks modelados	34399240
Errores de desalineación de gráficos	0		
Depósito inicial	1000.00	Spread	Actual (2)
Beneficio neto total	1929.84	Beneficio bruto	2874.28
Factor de beneficio	3.04	Beneficio esperado	3.99
Drawdown absoluto	213.31	Drawdown máximo	295.37 (16.90%)
Drawdown relativo		Drawdown relativo	23.04% (235.46)
Total de transacciones	484	Posiciones cortas (% ganadoras)	255 (78.43%)
		Posiciones largas (% ganadoras)	229 (71.18%)
		Transacciones rentables (% del total)	363 (75.00%)
		Transacciones no rentables (% del total)	121 (25.00%)
		Mayor transacción rentable	42.15 transacción no rentable
		Media transacción rentable	7.92 transacción no rentable
		Número máximo ganancias consecutivas (beneficio en dinero)	48 (228.91)
		pérdidas consecutivas (pérdidas en dinero)	7 (-70.98)
		Máx. beneficio consecutivo (número de ganancias)	228.91 (48)
		pérdidas consecutivas (número de pérdidas)	-70.98 (7)
		Promedio ganancias consecutivas	9
		pérdidas consecutivas	3



Strategy type: Grid-Hedge
 Par to use: EURUSD
 Leverage: 1: 200 or higher
 Timeframe: M15

- **Set 2 Pipster 2k.set (BT 2 años)**

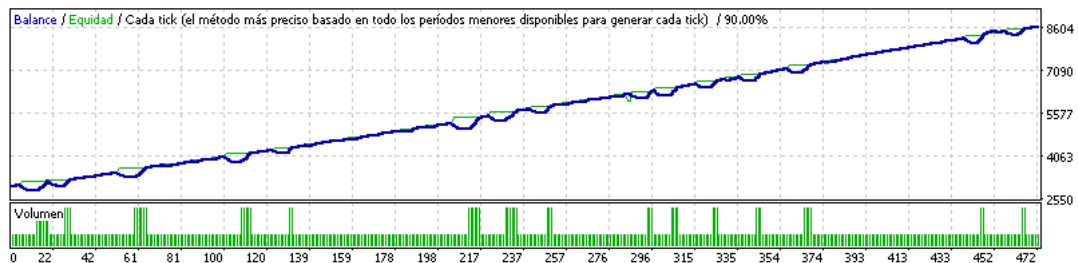
Símbolo	EURUSD (Euro vs US Dollar)		
Período	15 minutos (M5) 2018.01.02 00:00 - 2020.03.30 23:45 (2018.01.02 - 2020.03.31)		
Modelo	Cada tick (el método más preciso basado en todos los períodos menores disponibles)		
Parámetros	Magic=66000; LotK1_7=0.02; LotK8_13=0.06; LotK14_20=0.02;		
Barras en el historial	56609 Ticks modelados	34399240 Calidad del modelado	90.00%
Errores de desalineación de gráficos	0		
Depósito inicial	2000.00	Spread	Actual (1)
Beneficio neto total	3761.14 Beneficio bruto	5622.42 Pérdida bruta	-1861.28
Factor de beneficio	3.02 Beneficio esperado	7.99	
Drawdown absoluto	425.73 Drawdown máximo	589.86 (16.83%) Drawdown relativo	23.00% (470.22)
Total de transacciones	471 Posiciones cortas (% ganadoras)	238 (76.89%) Posiciones largas (% ganadoras)	233 (71.67%)
	Transacciones rentables (% del total)	350 (74.31%) Transacciones no rentables (% del total)	121 (25.69%)
	Mayor transacción rentable	84.68 transacción no rentable	-42.62
	Media transacción rentable	16.06 transacción no rentable	-15.38
	Número máximo ganancias consecutivas (beneficio en dinero)	47 (443.73) pérdidas consecutivas (pérdidas en dinero)	7 (-141.09)
	Máx. beneficio consecutivo (número de ganancias)	443.73 (47) pérdidas consecutivas (número de pérdidas)	-141.09 (7)
	Promedio ganancias consecutivas	9 pérdidas consecutivas	3



Strategy type: Grid-Hedge
 Par to use: EURUSD
 Leverage: 1: 200 or higher
 Timeframe: M15

- **Set 3: Pipster 3k.set (BT 2 años)**

Símbolo	EURUSD (Euro vs US Dollar)		
Período	15 minutos (M5) 2018.01.02 00:00 - 2020.03.30 23:45 (2018.01.02 - 2020.03.31)		
Modelo	Cada tick (el método más preciso basado en todos los períodos menores disponibles)		
Parámetros	Magic=66000; LotK1_7=0.03; LotK8_13=0.09; LotK14_20=0.03;		
Barras en el historial	56609	Ticks modelados	34399240 Calidad del modelado 90.00%
Errores de desalineación de gráficos	0		
Depósito inicial	3000.00	Spread	Actual (1)
Beneficio neto total	5630.94	Beneficio bruto	8425.80 Pérdida bruta -2794.86
Factor de beneficio	3.01	Beneficio esperado	11.96
Drawdown absoluto	638.60	Drawdown máximo	884.76 (16.85%) Drawdown relativo 23.00% (705.31)
Total de transacciones	471	Posiciones cortas (% ganadoras)	238 (76.89%) Posiciones largas (% ganadoras) 233 (71.67%)
		Transacciones rentables (% del total)	350 (74.31%) Transacciones no rentables (% del total) 121 (25.69%)
		Mayor transacción rentable	126.95 transacción no rentable -63.96
		Media transacción rentable	24.07 transacción no rentable -23.10
		Número máximo ganancias consecutivas (beneficio en dinero)	47 (665.11) pérdidas consecutivas (pérdidas en dinero) 7 (-211.82)
		Máx. beneficio consecutivo (número de ganancias)	665.11 (47) pérdidas consecutivas (número de pérdidas) -211.82 (7)
		Promedio ganancias consecutivas	9 pérdidas consecutivas 3



Strategy type: Grid-Hedge
 Par to use: EURUSD
 Leverage: 1: 200 or higher
 Timeframe: M15

The sets have been prepared so that the bot works automatically after a previous configuration and the client does not have to worry about anything. We offer 3 sets with different winnings and DD for each client to choose the configuration that suits them best.

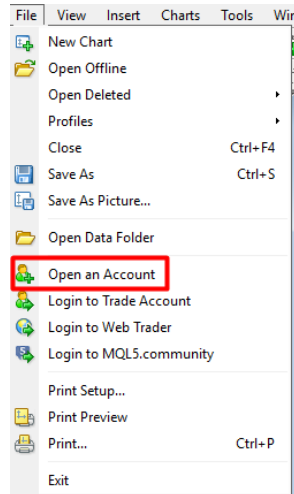
General Characteristics Pipster:

- Easy to configure and use (delivered with written and video tutorial)
- Accurate and reliable entry and exit points for operations
- Automated from start to finish: open, manage and close the best operations for the client
- Support by specific discord channel

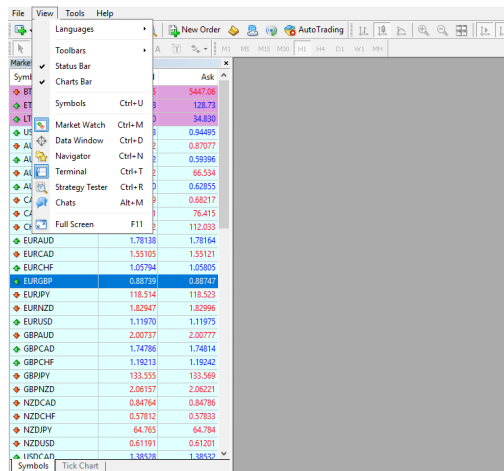
Configuration tutorial: (<https://youtu.be/jL-wPkuKj68>)

Step 1: Open MT4 inside your VPS server (<https://youtu.be/ZibeL3bN0Us>)

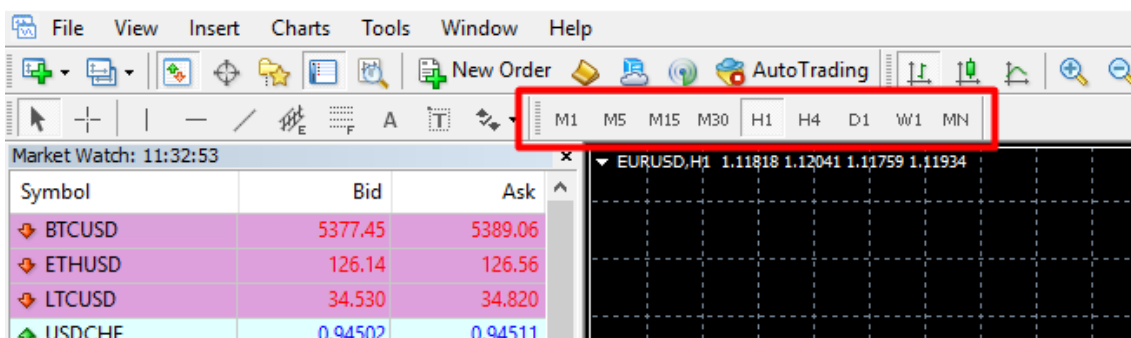
Step 2: Once inside your MT4 within the VPS server you must open your account, for this you must go to File-> Open an Account and put the data provided by the broker by mail.



Step 3: Once inside your account, open the EUR/USD pair and place it in the timeframe M15

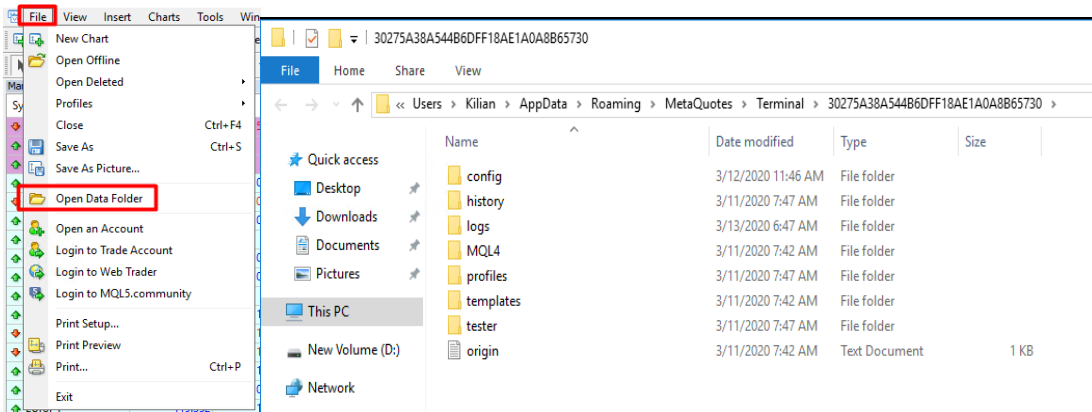


- Once the market watch is active, search for the pair and slide it to the gray part, its graph appears, apply the M15 timeframe.

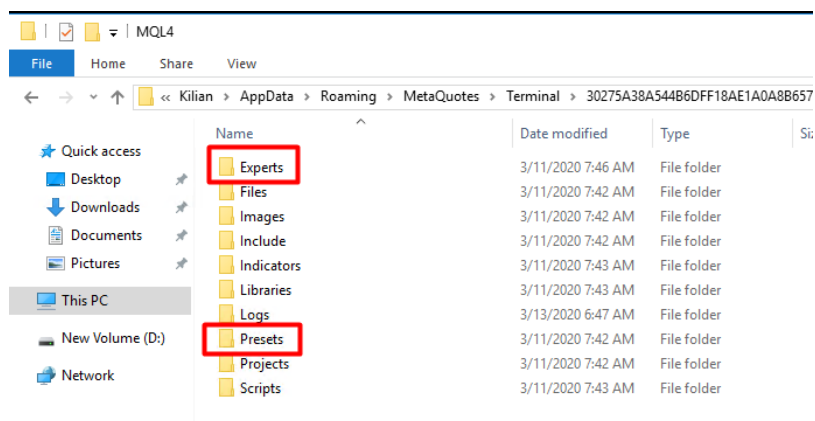


Step 4: Download the .ea file plus the sets that have arrived by mail and transfer them to the VPS, once you have the bot and its set inside the VPS, you must send them to the specific folder.

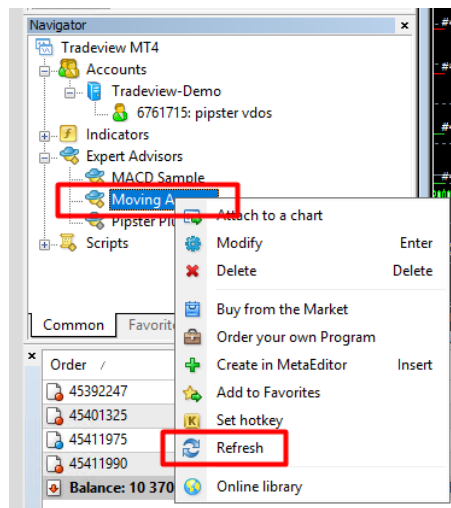
- Deposit the .ea file in the experts folder of the MT4, detailed below step by step.
 1. Deposit the .ea file in the experts folder of the MT4, detailed below step by step.



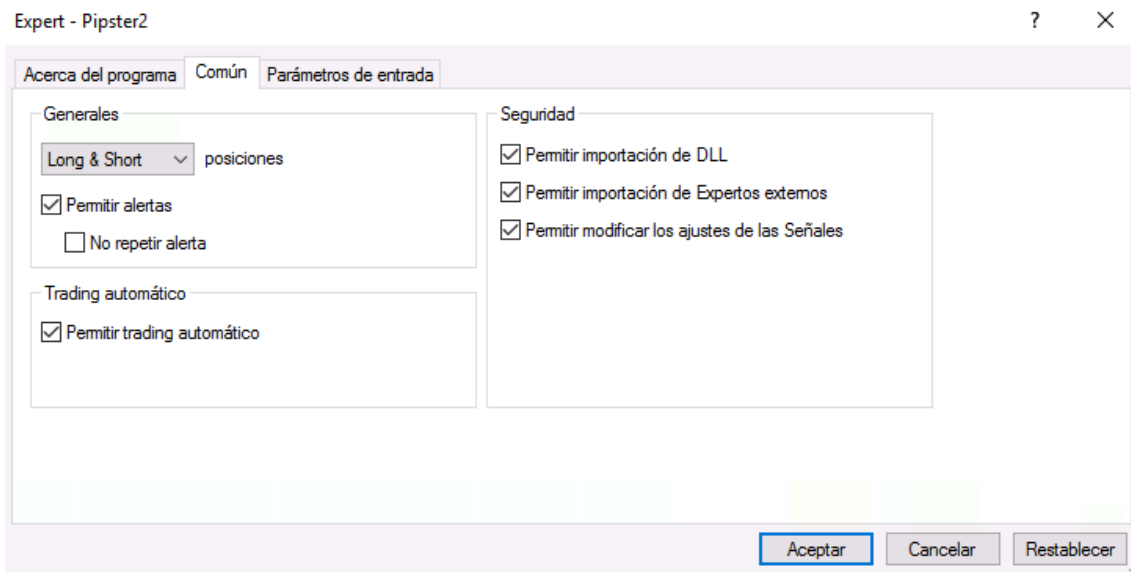
2. Go to the MQL4 folder and you must deposit the .ea file in the Experts folder and the set in the Presets folder



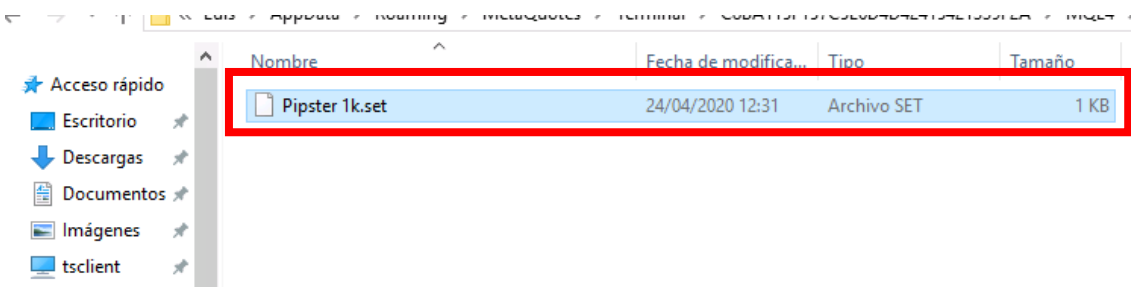
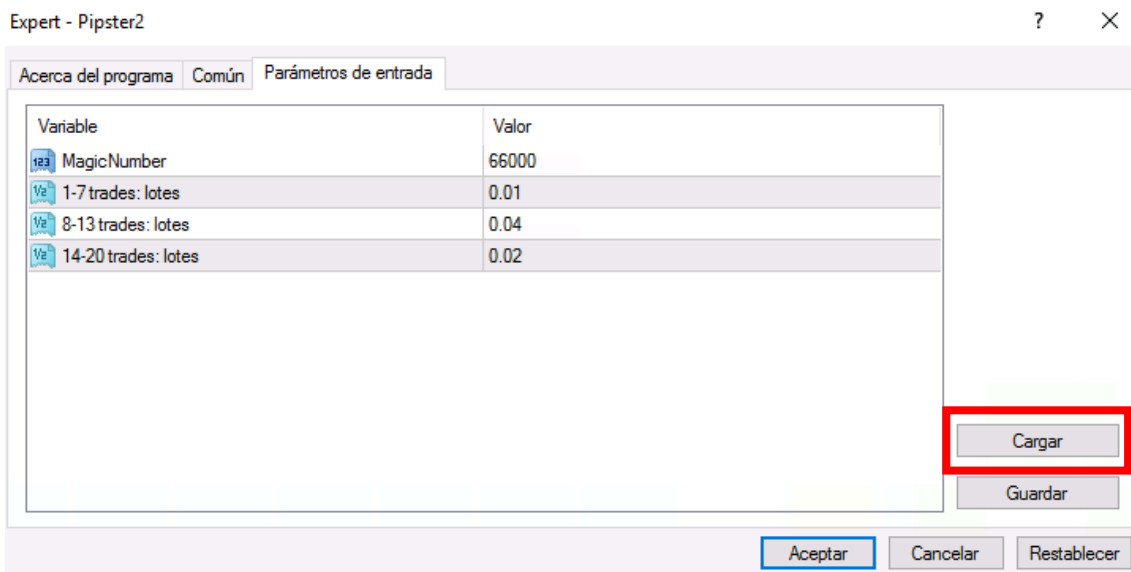
Step 5: Once you have deposited both files go back to MT4 and in Navigator on the experts folder right click and refresh, if you do not have Navigator visible go to View and activate it.



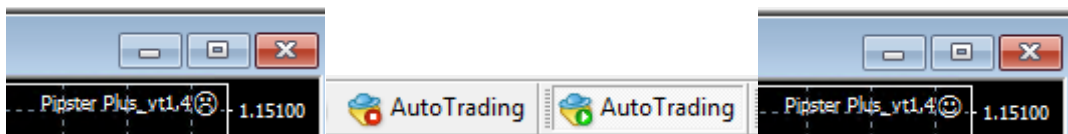
Step 6: Drag the file to the graphic and when you release a window with 3 options will appear, About - Common - Inputs, in common you must activate a series of options and leave it as in the image



Step 7: You need to load the set you have chosen to operate for it, go to Inputs and click on the Load button, this will redirect you to the presets folder where we have previously left the set, click on the set and hit open.



Step 8: At this moment, an emoticon with a sad face appears on your chart, that means that the bot is already configured, you just need to activate it, to activate it you must click on the autotrading button.



El bot ya ha sido activado y comenzará a operar cuando sus parámetros así lo indiquen.

Frequent questions:

Why should I use a VPS server?

It is necessary to use a VPS since the bot needs to be connected 24 hours a day and the best way to have a PC connected that number of hours is a dedicated server. If you are thinking of keeping your own PC connected 24 hours a day, remember that you can have internet or even electricity cuts, which would cause your bot to stop working and consequently may generate losses.

Why do we operate with MT4 and how does it work?

The bot's programming is in MQ4 and in Metaquotes language, the MT4 company must therefore operate in MT4.

If I want to stop the bot, how should I do it?

To stop a bot is as simple as stopping autotrading (see step 8), if you want to close the total of the operation you should also close all the operations that are open or to put (limit or stop), there is a video tutorial explaining this in more detail.

How do I see the earnings that I have in my account?

To see the earnings of your account you must go to Balance within the trade section of the MT4, there your earnings will accumulate.

What is DD or drawdown?

The DD or drawdown is the data that indicates the float of the account, the float is the negative or positive total that your account has on current operations, that is, if my bot has 5 open operations and you are indicating a -10 €, it means that if I stop the operation at that moment I must assume those € 10 of losses. The float of an account can also be positive.

Can I start and stop the bot every day?

Pipster Plus is programmed to operate in the long term, it is a bot that has the need to operate for several days or weeks, therefore it is not recommended to stop it daily.

Can I modify the bot parameters?

Of course, but requires great knowledge, Arbistar 2.0 provides you with several sets of different risk-benefits so you can choose which one best suits you.

What is a SET?

A SET is a pre-configuration of the bot. They are a series of parameters that have been programmed in a certain way and that will make the bot act in the way indicated by the SET.

Links:

Links:

www.arbistar.com (Página oficial)

www.arbistar.com/vps (Servidor vps recomendado)

<https://youtu.be/5Oa5o1UUbGQ> (Básicos de MT4)

<https://youtu.be/DxIOv1CnXHc> (Cierre de un par)

<https://youtu.be/B1gbEwmWXYE> (Importancia del uso del VPS)

<https://youtu.be/ZibeL3bN0Us> (Contratar un servidor VPS)

<https://youtu.be/iL-wPkuKj68> (Configurar el bot con su set)

<https://www.arbistar.com/broker/euro> (Enlace Axitrader EUR)

<https://www.arbistar.com/broker/usd> (Enlace Axitrader USD)